

CELEBRATING  
**19**  
YEARS OF  
SUCCESS



**SMP Constructions Pvt. Ltd.**

Engineers & Contractors

An ISO 9001:2015 Certified

WE TURN **YOUR VISION**  
INTO **REALITY**



**SMP Construction Pvt. Ltd.**  
Engineers & Contractors

### Contact Us

📍 SMP Constructions Pvt. Ltd. 156 Phase-II GIDC Industrial Estate, Bharuch-392015

☎ +91 9876 503 089 (Sandeep Shah) +91 8980 013 599 (Kuldeep Verma)  
Land Line: +91 2642 225636

✉ info@smppconstructions.com | sandeep@smppconstructions.com  
kuldeep@smppconstructions.com

🌐 www.smpconstructions.com





# Introduction

Incorporated in 2002 as a company specialized in industrial and commercial construction, **SMP Constructions Pvt. Ltd.** has successfully defined its objectives & positioned itself as one of the swiftly developing organizations in the construction industry. The company has to its credit many prestigious projects in Industrial, Power, Institutional & Infrastructure sectors and is always acknowledged as a reliable & professional construction company by astute & quality conscious market.

In nearly two decades, we have built a strong foundation for commercial and industrial construction throughout Gujarat and parts of Maharashtra and Rajasthan. We are known for our Time Commitment, Quality Construction, and Customer Satisfaction. We also have the marked distinction of taking challenging assignments, which is an essential element of successful construction. Our office at Bharuch, with a close proximity to various Industrial Estates, has led towards bagging of prestigious contracts for varying constructions with reputed companies.

With strong workforce of professionally qualified construction managers, engineers and supervisors backed up by the latest construction equipment & technologically advanced work environment, SMP offers most customized services to meet the evolving needs of individual customers.

In addition to customer satisfaction, achieved by timely executing projects of desired quality, we strive towards building long term relationships with our valued customers.

Today, **SMP Constructions Pvt. Ltd.** is one of the construction companies certified under ISO 9001:2015 quality management system by International Certification Registrar.





## Core Values

- Focus on timely delivery of projects
- Practice quality controls as per standards
- Ensure safety of all Walk hand in hand with technology
- Encourage use of innovative approaches for project management
- Due weightage be given to customer satisfaction
- Establish cordial work environment
- Realize Social Responsibility at all levels

## Our Mission

From the beginning our mission has been to complete all undertaken projects to the best interest of the clients in accordance with time and budgetary constraints. SMP is characterized by high standards of professionalism and it will strive to be the best in class while meeting the expectation of all the stakeholders.



# Our Achievements

- Completed single order value of 45.5 Crore in 1.5 year with Zero Accident for Garda Chemicals
- Completed a plant building at a height of 56-meter for Indofill Unit-3 Dahej.
- Completed projects with zero accidents.
- Completed all projects without disputes.
- High customer satisfaction that has landed us multiple orders from the same companies' time and again.
- Completed all orders well within time frame (Never penalized)
- Worked & registered with renowned international and domestic project management consultants
- 2000 Cmt. concrete Raft in 4 pours at G.C.L.

# AWARDS RECOGNITION & CERTIFICATES



## Our Valued Consultants

Sr No.	Consultant
01	Thyssenkrupp Industrial Solutions Pvt. Ltd.
02	Dr. Kelkar Designs Pvt. Ltd.
03	R.K. Consultants
04	Ambekar Associates
05	Mott Macdonald
06	Epicons Consultant Pvt. Ltd.
07	SHAH & TALATI
08	Doshi Consultants Pvt.Ltd
09	Cushman and wakefield
10	Shroff & Associates (Engineer) Pvt. Ltd. Shroff Consulting Engineers LLP.
11	Tata Consulting Engineers
12	Padariya Associates
13	Facilities And Building Solutions Pvt. Ltd (FABS Consultant)
14	TUV Nord Group Consultancy
15	DCL Consultants Limited
16	SMPS Consultants LLP.

## Our Valued Clients

Sr No.	Clients	Sr No.	Clients
01	Suzlon Infrastructures Ltd.	21	Sterling Sez
02	Suzlon Infrastructures Services Ltd.	22	Sterling Biotech Limited
03	Suzlon Gujarat Wind Park Ltd.	23	Dorf Speciality Catalyest Pvt.Ltd.
04	Suzlon Energy Ltd.	24	Lanco Solar Energy Pvt. Ltd.
05	Inox Wind Infrastructure Services Ltd.	25	Deepak Nitrite Limited
06	Vestas Wind Systems	26	Rashmi Seamless Ltd.
07	Gujarat Fluorchemicals Ltd.	27	Gamesa Eolica
08	Gharda Chemicals	28	Grasim Industries Ltd.
09	Alembic Pharma	29	RBU Projects
10	Hindustan Dorr-oliver Ltd	30	Gujarat Insecticides Limited
11	ATG Tires PVt.Ltd.	31	SRF Limited
12	ABG Shipyard	32	GACL- NALCO
13	Torrent Power Ltd.	33	Firmenich Aromatics India Pvt. Ltd.
14	Torrent Energy Ltd.		
15	Torrent Pharmaceuticals Ltd.		
16	FFE Minerals India Ltd.		
17	Shree Ram Alkali & Chemicals (DCM)		
18	UPL		
19	Indofil Chemicals Company		
20	Adani Power		



## Area of Operations

SMP Construction Pvt. Ltd exclusively takes up construction activities as an area of focus, while also offering MEP services to satisfy client's need. In this model, we facilitate coordination among various activities. We have provided services in following areas over past two decades:

Structural work



Civil work



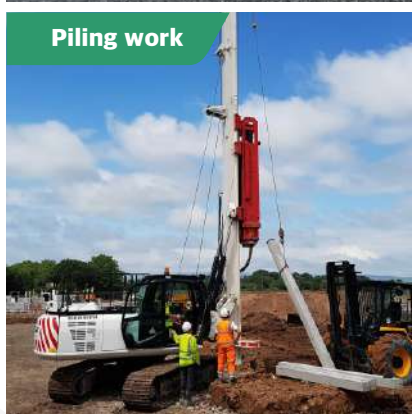
Road work



well point dewatering system



Piling work



Industrial plant & Buildings



Solar Power



Commercial Buildings



Interior work



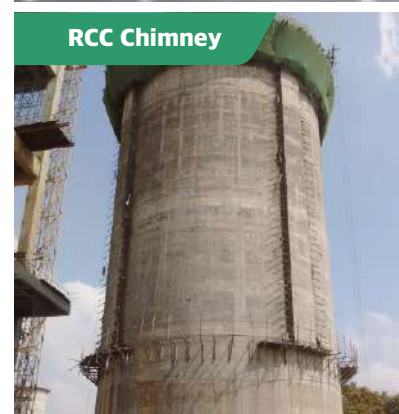
Clean Class-1000



Earth work



RCC Chimney



Marine structure



Wind farm





# MAJOR ON GOING PROJECT



**GACL-NALCO Alkalies & Chemicals  
Pvt. Ltd.**  
Dahej  
Value:- 22.86 cr



**Firmenich Aromatics Production  
(I) Pvt. Ltd**  
Dahej, Sez-I  
Value:- 3.72 cr



**Suzlon Gujarat Wind Park  
Ltd.**  
Kutch, Gujarat  
Value:- 4.43 cr



**Alembic Pharmaceuticals Ltd.**  
Panelav, Panchmahal  
Value:- 12.90 cr



**Gharda Chemicals Ltd. (PEI Project)**  
Panoli  
Value:- 26.01 cr



**Gharda Chemicals Limited**  
Saykha, Vagra  
Value:- 45.05 cr



**SRF Limited**  
Dahej  
Value:- 16.47 cr



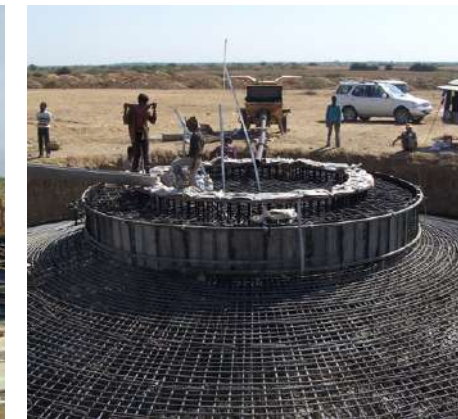
**Gujarat Insecticides Limited**  
Ankleshwar  
Value:- 12.00 cr



# OUR COMPLETED PROJECT



Suzlon Infrastructures Ltd.  
Gujarat  
Value:- 68.42 cr



Suzlon Infrastructures Ltd.  
Rajashtan  
Value:- 13.00 cr



Suzlon Infrastructures Ltd.  
Maharashtra  
Value:- 48.46 cr



Suzlon Infrastructures Services Ltd.  
Gujarat  
Value:- 10.59 cr



Suzlon Infrastructures Services Ltd.  
Rajashtan  
Value:- 9 cr



Suzlon Infrastructures Services Ltd.  
Maharashtra  
Value:- 10.33 cr



Suzlon Gujarat Wind Park Ltd.  
Gujarat  
Value:- 13.44 cr



Suzlon Gujarat Wind Park Ltd.  
Tamil Nadu  
Value:- 3.66 cr



Suzlon Gujarat Wind Park Ltd.  
Rajashtan  
Value:- 5.33 cr





Suzlon Gujarat Wind Park Ltd.  
Madhya Pradesh  
Value:- 7.28 cr



Suzlon Energy Ltd.  
Andhra Pradesh  
Value:- 41.82 cr



Inox Wind Infrastructure Services Ltd.  
Gujarat  
Value:- 31.03 cr



Inox Wind Infrastructure Services Ltd.  
Rajashtan  
Value:- 10.35 cr



Inox Wind Infrastructure Services Ltd.  
Madhya Pradesh  
Value:- 19.33 cr



Vestas Wind Systems  
Tamil Nadu  
Value:- 19.33 cr



Gujarat Fluorchemicals Ltd.  
Rajashtan  
Value:- 7.17cr



Garda Chemicals  
Panoli  
Value:- 17.50 cr



Alembic Pharma  
Jarod  
Value:- 39.30 cr



GSFC  
Vadodara  
Value:- 10.55 cr



ATG Tires Pvt.Ltd.  
Bharuch  
Value:- 19.50 cr



ABG Shipyard  
Bharuch  
Value:- 19.65 cr



Torrent Power Ltd.  
Dahej  
Value:- 6.87 cr



Torrent Energy Ltd.  
Dahej  
Value:- 27.15 cr



Torrent Pharmaceuticals Ltd.  
Dahej  
Value:- 21.83 cr



Shree Ram Alkali & Chemicals  
Jhagadia  
Value:- 7.68 cr



United Phosphorus Ltd (UPL)  
Jhagadia  
Value:- 14.32 cr



RBU Projects  
Anantpur  
Value:- 46.00 cr





Indofil Chemicals Company  
Dahej  
Value:- 33.85 cr



Adani Power  
Mundra  
Value:- 11.36 cr



Sterling Sez  
Jambusar  
Value:- 7.14 cr



Sterling Biotech Limited  
Jambusar  
Value:- 24.29 cr



Lanco Solar Energy Pvt. Ltd.  
Gujarat  
Value:- 10.28 cr



Lanco Solar Energy Pvt. Ltd.  
Rajashtan  
Value:- 4.81 cr



Lanco Solar Energy Pvt. Ltd.  
Maharashtra  
Value:- 4.66 cr



Deepak Nitrite Limited  
Dahej  
Value:- 7.50 cr



Grasim Industries Ltd.  
Vilayat  
Value:- 5.12 cr

# Plant & Machinery

At SMP, mechanized construction is the essence of its operations. It owns & operates a large fleet of the best & the latest construction plants & equipment. These include Earth Moving Equipment, Concrete Batching Plants, Crushing Plants, Transit Mixers, Concrete Pumps, Tower Cranes, Compactors and other road construction equipment. These plants are procured from the best construction equipment manufacturers, which are as followed.

Sr No.	Name of the Equipment	Nos.
<b>Excavators &amp; Loaders</b>		
01	Tata Hitachi LC-200 (Excavator)	2
02	Tata Hitachi LC-110 (Excavator)	2
03	JCB 3D	6
04	Bull Mounted Tractor Loaders	6
05	L&T Vibro Rollers	2
<b>Transportation</b>		
01	Tata Dumpers	1
02	Tempo	3
03	20 T Trailers	4
04	Tractors With Trolley	21
05	Water Tankers	4
<b>Concrete Machinery Equipments</b>		
01	Mobile Batching Plant (AJAX Fiory ARGO-4000 4.00Cu.mt/batch i.e. 16 CMT/Hr capacity)	4
02	Batching Plant ( Universal, 30 CMT/Hr)	1
03	Batching Plant ( Nilkanth, 30/45 CMT/Hr)	5
04	Batching Plant ( Schwing Setter, 30/45 CMT/Hr)	1
05	Boom Pressure 36mtr	3
06	Aquarius Concrete Batching Plant (MP 25-50 m3 )	1
07	Weigh bridge	3
08	Concrete Pump (40 Cu.mt/Hr capacity)	10
09	Transit Mixer (Schwing Setter)	9
10	Vibrator Machine ( Electronic/Petrol)	45
11	Tower Crain With 0.025CMT Bucket-18mt.	2





Sr No.	Name of the Equipment	Nos.
	<b>Survey</b>	
01	Level Instrument	10
02	Auto Level TB 2	10
03	Theodolite	6
04	Total Stations	2
	<b>Shuttering Material</b>	
01	Shuttering Plates	14,000
02	Acro plates	3,500
03	Acro SPAN	600
04	Steel Props	1,200
05	H Frame SCA Folding	5,000
06	M.S.40 Dia B Class SCA Folding Pipes.	12,000
	<b>Site Setup</b>	
01	4-Accommodation Bunk House	3
02	8-Accommodation Bunk House	5
03	Utility Van (Mahindra)	10
04	Mahindra Bolero DLX	5
05	Motor Cycles	21
06	Labour Camp Facility	1,800
07	Prefabricated Store Setup	4
08	Prefabricated Reinforcement shed	4
09	Prefabricated Cement shed	3
10	Prefabricated Labour Camp Shed ( big )	13
11	Prefabricated Labour Camp Shed ( Small )	6
12	P.V.C Labour Toilet	6
13	Staff Toilet Block	13
14	Prefabricated Office	4

Sr No.	Name of the Equipment	Nos.
	<b>Site Laboratory Setup</b>	
01	Concrete cube testing Machine(100mt&200mt)	10
02	Soil Compaction Testing Equipment i.e. Oven, Core Cutter, Balance & required Equipment's	8
03	Material Testing (Sieve Analysis)	5
04	Slump Cone Set	10
05	Sand compaction testing Jar	1
	<b>Others</b>	
01	Soil Compactors	6
02	Electric Water Pumps	16
03	Dewatering Pumps	28
04	Screed Vibrators	2
05	Hand Cart	25
06	Soil Leveler	2
07	Roller (1 mt)	1
08	82.5 KVA Generator Sets	3
09	5-10 KVA Generator Sets	10
10	125 KVA Generator Sets	4
11	15 KVA & 25 KVA Generator Sets	7



# Health Safety & Environment Policy

HSE is an integral part of planning and execution of projects at SMP Constructions Pvt. Ltd. Safe working environment at all our construction sites is a critical success factor for our business. We aim to protect the health and safety of all our employees and its associates and strive to minimize the environmental impact associated with our operations.

## We Are Committed To

Compliance with all the relevant legal requirements including regulations, standards and codes of practices for Health, Safety and Environment and shall practice high level of standards that reflect the best practices in construction sector Provide necessary PPE's and Safe Operating Procedures by identifying and mitigating all possible risks & hazards to carry out required tasks with no injury to any personnel. Promote HSE culture through clear communication to all its employees, stake holders, contractors and service providers by informing them about their obligations for achieving the objective of the policy. Promote a supportive culture encouraging people to actively participate in HSE improvement initiatives and activities and empowering them to intervene and report on HSE issues or concerns to achieve continual improvement in HSE management and performance. Adopt HSE culture at all levels by providing qualified resources, training the employees regarding HSE awareness, skill and competency enhancement. Systematic approach in HSE management to ensure continuous improvement. It is our commitment to health & safety that has prompted us to structure our Safety Policy to suit the requirements of ISO 18001:2007. And It is our respect for the environment that SMP Constructions Pvt. Ltd. confirm to the requirement of ISO 14001:2015.



# Quality Policy

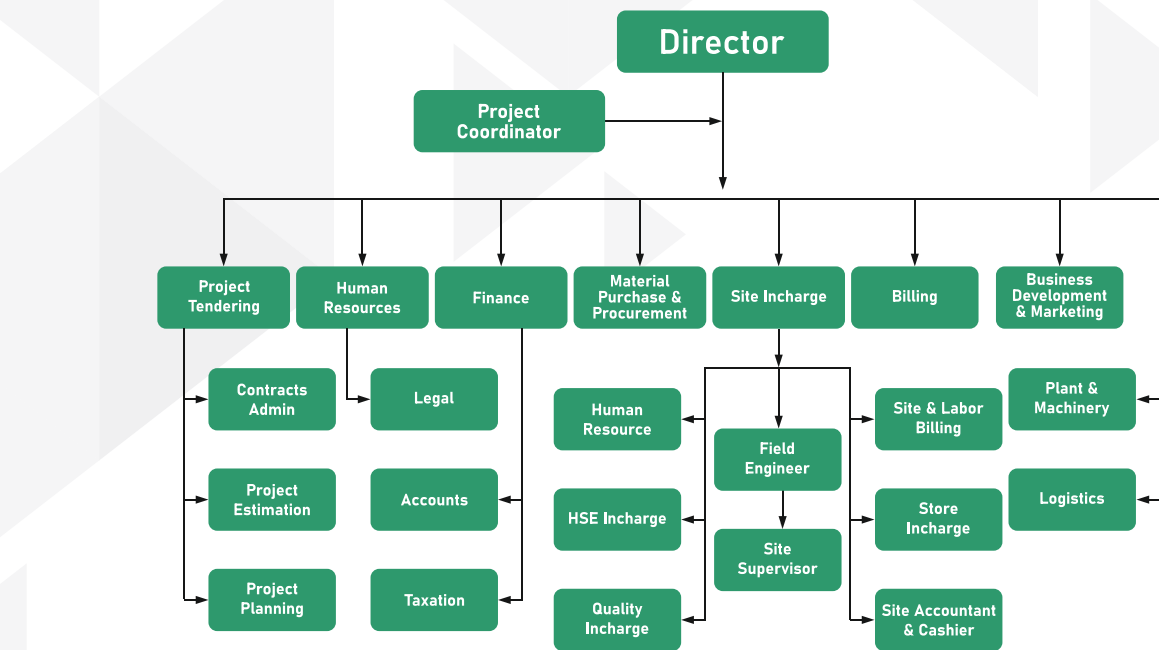
We at SMP Constructions Pvt. Ltd. ensure that we meet our responsibilities to our customers and To Deliver on-time, on-quality products and services that exceed our customer's expectations. We understand our customer's expectations, implement improvements to increase customer satisfaction.

## We Are Committed To

Ensure & emphasize that customer needs and expectations and all statutory and regulatory requirements are fulfilled with the aim of achieving Customer satisfaction through our products and services. We gain valuable feedback from our customers to ensure we are meeting their needs at the highest level. We seek and incorporate customer's feedback to continuously improve our performance and the quality system's effectiveness. We will actively pursue quality improvements through programs that enable each employee to do their job right the first time and every time. Ensure that the Management Reviews set and review the quality objectives, and report on the internal audit results as a means of monitoring and measuring the processes and the effectiveness of the Quality Management System. It is this commitment to quality that has prompted us to structure our Quality Management System to suit the requirements of ISO 9001:2015.







## Corporate Office



## Felicitation & Training





## Testing Lab



## OUR SITE OFFICE



## OUR RMC PLANT





